



VC-TR60A

4K Dual Lens Speaker Tracking PTZ Camera

VC-TR60A is a multi-talented AI-powered PTZ camera. Advanced features include speaker tracking, motion tracking, auto-framing, dual IP stream output and picture-in-picture output over HDMI and USB. Its 4K sensor and a 12x zoom provides excellent video quality output simultaneously over IP, HDMI & USB. The PTZ performs superbly in low light and delivers impressive auto-focusing and auto-exposure performance.

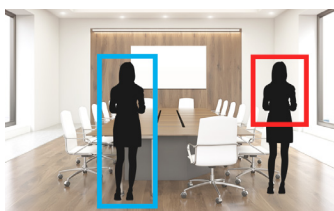
Key Features

- Certified for Microsoft Teams
- Dual Lens Camera with 12x Optical Zoom
- Smart Speaker Tracking with integrated voice sensors
- Picture in Picture Function
- Motion-detect and auto-tracking
- HDMI, Ethernet, and USB simultaneous output



Intelligent Speaker Tracking

VC-TR60A incorporates an array of directional sound sensors that detect the location of active human voices. The camera head moves and zooms to shoot the current speaker, re-framing as other voices enter the discussion.



AI Motion Tracking

VC-TR60A features sophisticated auto-tracking and framing modes. Its intelligent human detection algorithms deliver smooth tracking for conferences, presentations, meeting rooms, classrooms and studios.



PIP Output

VC-TR60A can combine the two video images in a picture-in-picture display with output over HDMI and USB. This allows the audience to watch a composite video that incorporates both the wide-angle view and the tight shot. This function can be activated independently, or at the same time as running motion or speaker tracking.



Dual Video Output

VC-TR60A generates two video streams from its panoramic fixed camera and the robotic zoom head. These can be delivered over IP into a media processor, IP-based production software or a lecture capture system to provide two camera angles from a single unit.



USB Audio Reference Line In

Attach a USB speakerphone directly to the VC-TR60A for single cable connection to your MTR or laptop. In speaker tracking mode, the camera's tracking algorithm will exclude sound produced by the speakerphone, ensuring that the VC-TR60A focuses only on individuals in the meeting space.



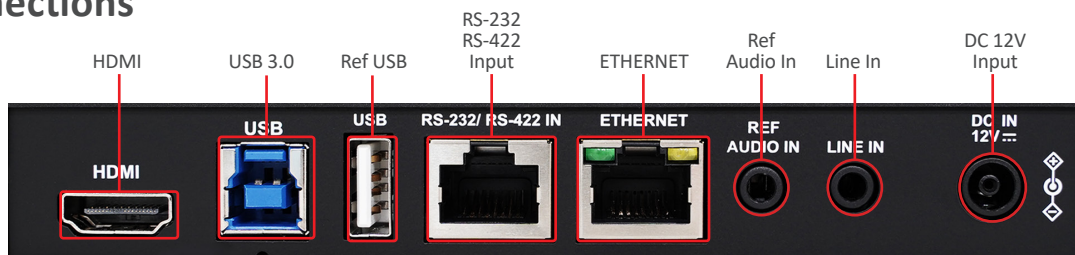
Product Specifications

PTZ Camera	
Sensor	1/2.8" 8.51M
Video Format	2160p : 60 / 50 2160p : 30 / 25 1080p : 60 / 50 / 30 / 25 720p : 60 / 50 / 30 / 25 1080i : 60 / 50
Video Output (HD) Interface	HDMI / Ethernet / USB
Optical Zoom	12x
Digital Zoom	8x
Horizontal Viewing Angle	81°
Vertical Viewing Angle	50.5°
Diagonal Viewing Angle	88.9°
Aperture	F1.8 ~ F3.6
Focal Length	3.4 ~ 43.3 mm
Shutter Speed	1/25 ~ 1/10,000 sec
Minimum Object Distance	Tele:1.5m / Wide:1m
Video S/N Ratio	> 50dB
Minimum Illumination	0.5Lux (F1.8, AGC ON)
Focus System	Auto / Manual
Gain Control	Auto / Manual
White Balance	Auto / Manual
Exposure Control	Auto / Manual
WDR	Yes
3D NR	Yes
Image Flip	Yes
PIP	Yes
Auto Tracking	Yes
Speaker Tracking	Yes
Auto Framing	Yes
Panoramic Camera	
Sensor	1/2.8" 8.51M
Video Format	2160p 30 / 25 1080p 60 / 50 / 30 / 25
Horizontal Viewing Angle	110°
Vertical Viewing Angle	78°
Aperture	F2.0
Focal Length	f=1.89mm

Pan & Tilt	
Panning Angle	+170° ~ -170°
Panning Speed	0.1°~100°/sec
Tilting Angle	+90° ~ -30°
Tilting Speed	0.1°/s ~ 60°/sec
Preset Positions	256
Output	
HDMI	PTZ : 2160p 60 Panoramic : 2160p 30
IP Stream	PTZ Dante AV-H : 2160p 30 RTSP : 2160p 30 / 720p 30 Panoramic RTSP : 1080p 60
IP Compression	H.264
USB Output	2160p 30
USB Compression	H.264 / MJPEG / NV12
Network	
IP Protocol	HTTP / RTSP / RTMP / RTMPS / SRT / Dante AV-H
PoE	PoE+ (IEEE802.3at)
Audio	
Audio Input	Line In
Ref Audio Input	USB / Line In
Audio Output	Ethernet / USB / HDMI / Dante
Audio Compression Format	AAC / PCM
Camera Control	
Interface	RS-232 / RS-422 / Ethernet / USB
Protocol	VISCA / ONVIF
UVC	Yes
UAC	Yes
General	
DC In	12V +/- 20%
Power Consumption	PoE: 15W DC In: 14W
Body Color	Black / White
Weight	1.5 kg
Dimension (WxHxD)	190 ×185 ×144 mm

*Dante AV-H upgrade is only available on V1 models.

I/O Connections



Lumens®

Lumens Integration, Inc.
4116 Clipper Court
Fremont, CA, 94538
Phone: +1-866-600-0988
Fax: +1-510-252-1389

Lumens Europe
De Nayerstraat 17 9470
Denderleeuw Belgium
Phone: +32-473-58-38-95
Fax: +32-2-452-76-00



www.MyLumens.com