



VC-TR41

AI Auto-Tracking Camera

Lumens VC-TR41 is a dual-lens motion-tracking PTZ camera. Its AI technology makes it easy to identify and track a moving subject smoothly and reliably. VC-TR41 features a 20x optical zoom lens with auto framing technology that intelligently zooms to capture all guests in view. VC-TR41 integrates with Lumens LC300 series CaptureVision system to automate video production and lecture capture, making it ideal for use in presentations and learning environments.

Key Features

- Multiple AI Tracking, Framing and Auto-Switching modes
- 1080P 60fps with 20x Optical Zoom
- HDMI, SDI, and Ethernet simultaneous output
- Zoom certified ProAV camera
- Supports RTSP / RTMP / RTMPS / SRT streaming



Everywhere Tracking Mode

The camera smoothly will follow wherever the presenter goes. You can simply change the tracked subject by clicking on the individual via the web interface.



Partition Tracking Mode

When the presenter moves inside a user-defined Partition Area, the camera switches to a preset angle and zoom. When outside a Partition Area, the camera autonomously follows the presenter.



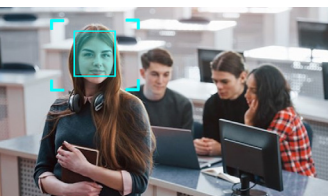
Stage Tracking Mode

When inside the Tracking Area, the camera follows the presenter with a panning (left-right) movement. When the presenter moves outside the Tracking Area, the camera stops tracking.



Auto-Framing Mode

With Auto-framing function, you can immediately detect the participants in a meeting. It dynamically adjusts its angle frame to include all delegates, re-framing the view if participants join or leave during the session.



Presenter and Audience Modes

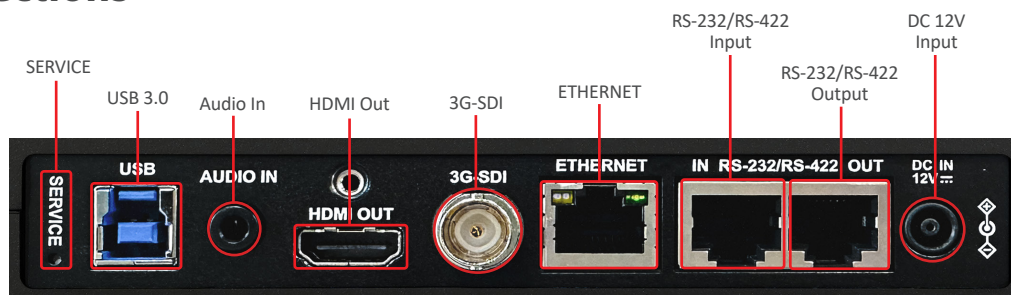
Paired with the CaptureVision LC300 series media processor, VC-TR41 units can be set in Presenter or Audience Mode. Cameras can be set to track speakers or allow contributions from audience members, with the processor automatically switching cameras to create a professional multi-angle production.



Product Specifications

PTZ Camera		Pan & Tilt	
Sensor	1/2.8" 2.16M	Panning Angle	+170° ~ -170°
Video Format	1080p : 60 / 50 / 30 / 25 720p : 60 / 50	Panning Speed	0.2° ~ 120°/sec
Video Output (HD) Interface	HDMI / Ethernet / 3G-SDI / USB 3.0	Tilting Angle	+90° ~ -30°
Optical Zoom	20x	Tilting Speed	0.2° ~ 80°/sec
Digital Zoom	12x	Preset Positions	256
Viewing Angle	58.7° (H) / 33° (V) / 67.3° (D)	Output	
Aperture	F1.6 ~ F2.8	HDMI / 3G-SDI	1080p60
Focal Length	4.9mm ~ 94mm	IP Stream	PTZ Camera Main : 1080p60 Second : 720p30 Panoramic Camera : 720p30
Shutter Speed	1/25 ~ 1/10,000 sec	IP Compression	H.264
Minimum Object Distance	500mm	USB Output	1080p30
Video S/N Ratio	> 50dB	USB Compression	MJPEG
Minimum Illumination	1 lux (F1.6, 50IRE, 30fps)	Network	
Focus System	Auto / Manual	IP Protocol	HTTP / RTSP / RTMP / RTMPS / SRT
Gain Control	Auto / Manual	PoE	Yes (IEEE802.3af)
White Balance	Auto / Manual	Audio	
Exposure Control	Auto / Manual	Audio Input	Line In / MIC In
WDR	Yes	Audio Output	Ethernet / USB 3.0 / HDMI / SDI
3D NR	Yes	Audio Compression Format	AAC / PCM
Image Flip	Yes	Camera Control	
Auto Tracking	Everywhere / Stage / Partition / Audience Tracking	Interface	RS-232 / 422 (RJ-45) / Ethernet / USB 3.0
Auto Framing	Everywhere / Partition	Protocol	VISCA / ONVIF
Gesture Control	Yes	UVC	1.1
Panoramic camera		UAC	Yes
Sensor	1/2.8" 2MP CMOS	General	
Video Format	720p30	DC In	12V +/- 20%
Horizontal Viewing Angle	87°	Power consumption	PoE : 11W DC In : 10W
Vertical Viewing Angle	49°	Body Color	Black / White
		Weight	3.3 lbs (1.5 kg)
		Dimension	7.5" x 7.3" x 5.4" (190 x 185 x 138 mm)

I/O Connections



Lumens®

Lumens Integration, Inc.
4116 Clipper Court
Fremont, CA, 94538
Phone: +1-866-600-0988
Fax: +1-510-252-1389

Lumens Europe
De Nayerstraat 17 9470
Denderleeuw Belgium
Phone: +32-473-58-38-95
Fax: +32-2-452-76-00



www.MyLumens.com