



\*NDI® is a registered trademark of Vizrt Group.

## VC-TR40N

### AI-Powered NDI HX3 Auto-Tracking Camera



NDI HX3



OPTICAL  
ZOOM



AUTO  
TRACKING



AUTO  
FRAMING

Lumens VC-TR40N is an NDI-enabled dual camera auto-tracking PTZ. The camera works seamlessly with network-based NDI tools, including media processors, multi-channel recorders, live production software and streaming encoders.

### Key Features

- AI-Powered human detection for intelligent auto-tracking and framing
- NDI HX3 Support
- HDMI, 3G-SDI, IP and USB simultaneous output
- 1080P 60fps with 20x Optical Zoom
- Mount upright or inverted



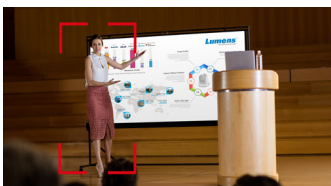
### NDI Technology

Connecting the camera to an NDI network means video, audio, control and power down a single Ethernet cable.



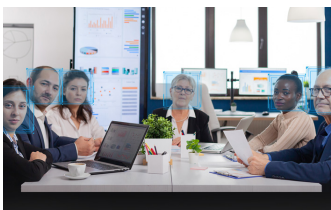
### Intelligent Modes

VC-TR40N supports stage tracking, everywhere tracking and partition tracking modes so that you can optimize the sensors to track more accurately than ever and deliver superb results every time.



### Gesture Control Tracking

If you have multiple presenters on stage or require audience participation, all they need to do is raise their hands. The camera then switches its focus to the new target.



### Auto-Framing and Partition Framing Mode

Auto-framing modes automatically set the ideal camera position for a team meeting or group discussion. The modes frame the delegates and not the space around them.



### Flexible Mounting

Unlike many tracking cameras, VC-TR40N can be mounted vertically or inverted from the ceiling.



## Product Specifications

PTZ Camera	
Sensor	1 / 2.8" 2.16MP CMOS
Video Format	1080p60 1080p50 1080p30 1080p25 720p60 720p50
Video Output (HD) Interface	HDMI, Ethernet, 3G-SDI, USB 3.0
Optical Zoom	20x
Digital Zoom	12x
Horizontal Viewing Angle	58.7°
Vertical Viewing Angle	33°
Diagonal Viewing Angle	67.3°
Aperture	F1.6 ~ F2.8
Focal Length	4.9mm ~ 94mm
Shutter Speed	1 / 25 ~ 1 / 10,000 sec
Minimum Object Distance	500mm
Video S/N Ratio	> 50dB
Minimum Illumination	1 lux (F1.6, 50IRE, 30fps)
Focus System	Auto, manual
Gain Control	Auto, manual
White Balance	Auto, manual
Exposure Control	Auto, manual
WDR	Yes
3D NR	Yes
Image Flip	Yes
Auto Tracking	Everywhere / Stage / Partition
Auto Framing	Everywhere / Partition
Gesture Control	Yes
Panoramic camera	
Sensor	1 / 2.8" 2MP CMOS
Video Format	720p30
Horizontal Viewing Angle	111°
Vertical Viewing Angle	62°
Aperture	F2.4
Focal Length	3.1mm

Pan & Tilt	
Panning Angle	+170 ~ -170°
Panning Speed	0.2~120° / sec
Tilting Angle	+90 ~ -30°
Tilting Speed	0.2~80° / sec
Preset Positions	256
Output	
HDMI/3G-SDI	1080p60
IP Stream	PTZ Camera Main : 1080p60 Second : 720p30 Panoramic Camera : 720p30
IP Compression	H.264
USB Output	1080p30
USB Compression	MJPEG
Network	
IP Protocol	NDI HX3 / NDI HX2 / HTTP / RTSP / RTMP / RTMPS / SRT
PoE	Yes(IEEE802.3af)
Audio	
Audio Input	Line In / MIC In
Audio Output	Ethernet / USB 3.0 / HDMI / SDI
Audio Compression Format	AAC / PCM
Camera Control	
Interface	RS-232 / Ethernet / USB 3.0
Protocol	VISCA / ONVIF / NDI
UVC	1.1
UAC	Yes
General	
DC In	12V + / - 20%
Power consumption	PoE: 11W DC In: 10W
Body Color	Black / White
Weight	3.3lbs (1.5 kg)
Dimension	7.5" x 7.3" x 5.4" (190 ×185 ×138 mm)

## I/O Connections



# Lumens®

Lumens Integration, Inc.  
4116 Clipper Court  
Fremont, CA, 94538  
Phone: +1-866-600-0988  
Fax: +1-510-252-1389

Lumens Europe  
De Nayerstraat 17 9470  
Denderleeuw Belgium  
Phone: +32-473-58-38-95  
Fax: +32-2-452-76-00



www.MyLumens.com