



Lumens[®] |

Camconnect Pro & Nureva HDL410 XY coordinate Setting guide

Camconnect XY coordinate mode

In V1.8.31; XY coordinate mode is introduced, with this feature you do NOT need to set or define camera preset per Nureva Zone.

If you are unfamiliar with Nureva and Camconnect, please first see;

[https://www.mylumens.com/Download/NurevaHDL410%20\(coordinate\)%20Settings%20Guide%202024-0313.pdf](https://www.mylumens.com/Download/NurevaHDL410%20(coordinate)%20Settings%20Guide%202024-0313.pdf)

Initial settings /requirements

1. Select and turn on Nureva: HDL410 (coordinate).
2. Assign camera(s) per Nureva Zone.
3. Turn on XY mode for each Zone.

The screenshot displays the configuration interface for a Nureva HDL410 device. It is divided into two main sections: 'Array Microphone' and 'Device & Camera Mapping'.

Array Microphone Section:

- Device:** A dropdown menu is set to 'Nureva:HDL410(Coordinate)', highlighted with a green box and a '1' next to it.
- Device IP:** Set to '192.168.11.29'.
- Port:** Set to '8931'.
- Connect:** A toggle switch is turned on.
- Audio Trigger Level (dB):** Set to '78'.
- Time to Trigger Preset:** Set to '3sec'.
- Back to Home Time:** Set to '10 Sec'.
- Back To Home Camera:** Set to 'All'.
- Back To Home Position:** Set to 'Home' and '9'.
- Buttons:** 'Apply' and 'Cancel' buttons are at the bottom.

Device & Camera Mapping Section:

- Mapping Qty:** A dropdown menu is set to '1'.
- Zone Map:** A button is located above the table.
- Table:** A table with 5 columns: 'Zone No.', 'Primary Camera', 'Preset No.', 'AI Setting', and 'XY'.

Zone No.	Primary Camera	Preset No.	AI Setting	XY
1	VC-A61P(192.168.11.33)	1	Off	<input checked="" type="checkbox"/>
2	VC-R30(192.168.11.34)	2	Off	<input checked="" type="checkbox"/>
3	Off	3	Off	<input type="checkbox"/>
4	Off	4	Off	<input type="checkbox"/>
5	Off	5	Off	<input type="checkbox"/>
6	Off	6	Off	<input type="checkbox"/>
7	Off	7	Off	<input type="checkbox"/>
8	Off	8	Off	<input type="checkbox"/>
- Annotations:** A green box labeled '2' highlights the first two rows of the table. A green box labeled '3' highlights the 'AI Setting' column.
- Buttons:** 'Apply' and 'Cancel' buttons are at the bottom.

Operating /Setting up XY mode in zone map

To have XY mode operational, 3 steps are required;

NOTE: At this point, your Zones and Cameras should be mapped and Camconnect receives data from Nureva.

1. Get/set camera`s XY location.
2. Get /set anchor point`s XY location.
3. Align camera (s) with Anchor point (offset angle).

Get/set camera's XY location.

Note: Your reference point is HDL410 Bar #1 (this is your 0 degree).

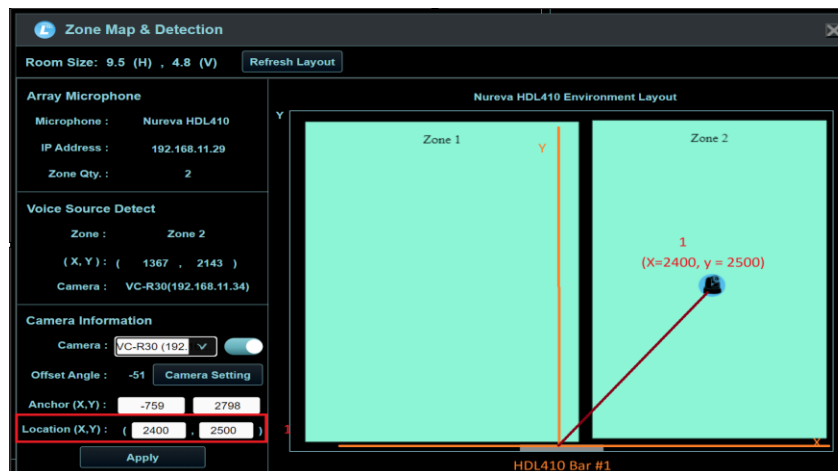
Only Zone2 camera 2 will be shown here, the same process and anchor point is used for zone 1, camera 1.

A. Get X Y location of camera.

Measure the distance along the X and Y axis as shown below (either positive or negative). You can also use the live data in voice source detect section but measurement is advised.

B. Enter X , Y location press apply.

C. Wait 3 seconds for data to be saved to memory.



Get/set Anchor point`s XY location.

Note: Your reference point is HDL410 Bar #1 (this is your 0 degree).

A. Get X Y location of Anchor point.

Measure the distance along the X and Y axis as shown below (either positive or negative). You can also use the live data in voice source detect section but measurement is advised.

B. In anchor field, enter X, Y location and press Apply.

C. Wait 3 seconds for data to be saved to memory.

Zone Map & Detection

Room Size: 9.5 (H) , 4.8 (V) Refresh Layout

Array Microphone

Microphone : Nureva HDL410

IP Address : 192.168.11.29

Zone Qty. : 2

Voice Source Detect

Zone : Zone 1

(X, Y) : (-873 , 1905)

Camera : VC-A61P(192.168.11.33)

Camera Information

Camera : VC-R30 (192) Camera Setting

Offset Angle : -51

Anchor (X,Y) :

Location (X,Y) : (,)

Apply

Nureva HDL410 Environment Layout

Zone 1

Zone 2

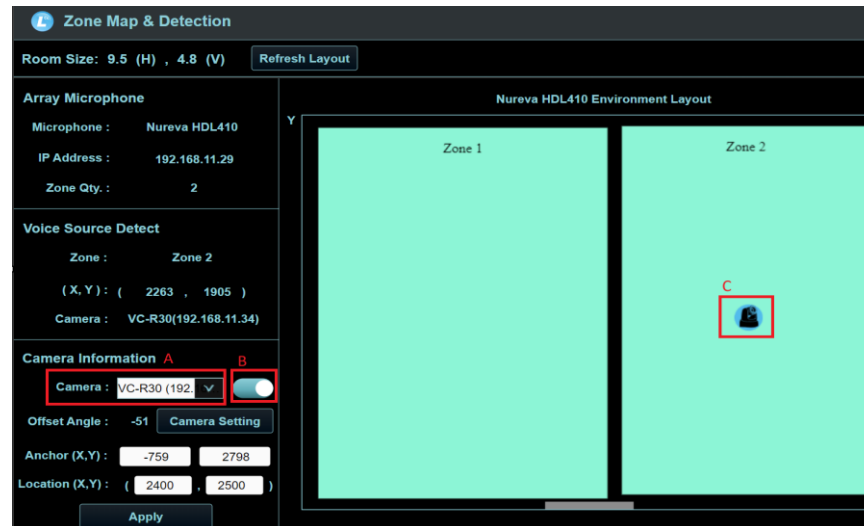
Anchor point (x=-759, y=2798)

HDL410 Bar #1

Align camera (s) with Anchor point (offset angle).

Part 1: Selecting which camera to align.

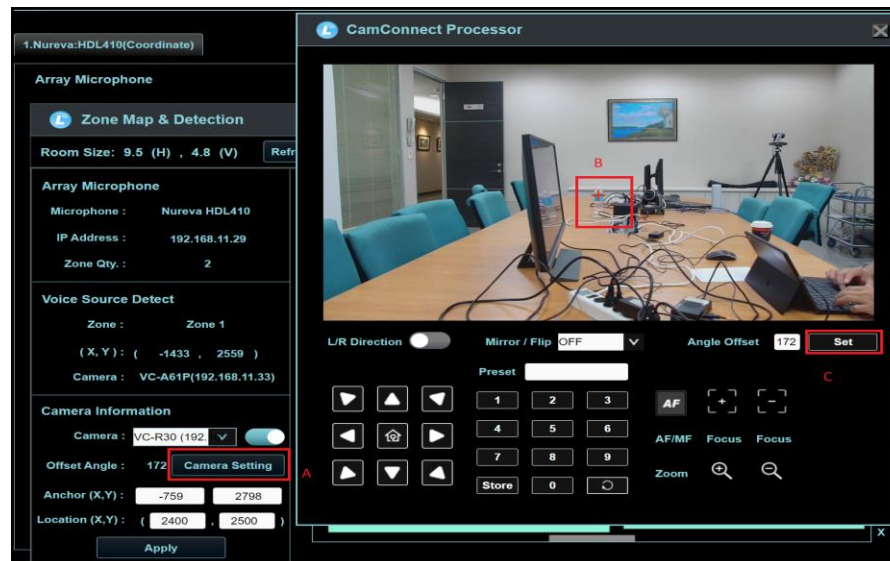
- Select camera to align.
- Turn on toggle button to show location of camera.
- Location of camera in environment.



Align camera (s) with Anchor point (offset angle).

Part 2: aligning camera with anchor point.

- Press on [Camera setting]
- Pan & Tilt camera, align the red [+] with anchor point.
- When aligned, press [Set].



Reminders

1. Do steps 1 to 3 for each camera in room.
2. If you do not see Nureva zones in Zone map, Press [Refresh Layout].
3. The default value of X, Y coordinates is in mm.
4. Your reference (0 deg) is HDL410 Bar #1.
5. In XY mode, you do not need to set, map or define camera preset.
6. Refer to slide 3 for sample working model as shown in browser.

Thank You!



MyLumens.com



Contact Lumens

