

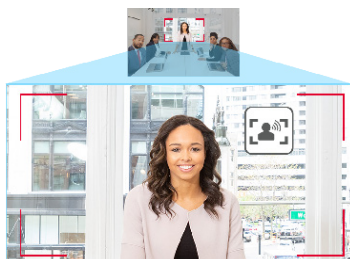
MS-10S 4K Video Soundbar



MS-10S is a fully featured all-in-one 4K video conferencing solution which is compatible with most video conferencing and unified communication platforms. With an intelligent camera system which supports voice-tracking and auto-framing, and beam-forming microphones, MS-10S delivers exceptional audio and visual results.

Key Features

- 4K UHD Wide-Angle Camera with Auto Framing
- Integrated voice tracking with built-in beam-forming microphones
- Optional Expansion Microphone Pod
- Voice, Audio, and Ethernet over USB



Voice-Tracking

The MS-10S features directional microphones which identify the position of participants in the room and intelligently adjust the camera to zoom onto the active speaker. This helps remote guests focus on discussions in the room.



Auto-Framing

The camera's auto-framing technology recognizes the area occupied within the room and adjusts the zoom angle to incorporate every guest. With a 120° field of view and the ability to zoom in 8x, the camera delivers superb HD or 4K output at all zoom settings.



Beamforming Microphones

MS-10S' four omnidirectional microphones have echo cancellation and noise suppression to capture every participant's voice clearly. The optional MS-EM1 expansion microphone is an ideal accessory for larger rooms. The MS-EM1 has a 3m pick-up range and is connected to the MS-10S by a 5m cable. A second expansion microphone can be added if required.



Clear Voice Speaker

MS-10S incorporates a 20W speaker with passive diaphragm to deliver sound output that can fill small and medium sized meeting rooms. Distortion is very well controlled at higher volumes, providing clear and natural voice communications.



Data Bridging

MS-10S has a network port which enables it to act as a bridge to deliver Internet connectivity to the host laptop over USB. This means that the PC or Mac running the video conferencing software is no longer reliant on WiFi for streaming. All connectivity (video, audio, control and network data) is routed thru a single USB port to the MS-10S.



Product Specifications

Camera	
Sensor	1 / 2.8" 8.29MP CMOS
Viewing Angle	120° (D) / 107° (H) / 74° (V)
Lens	Fixed lens (F2.2)
Resolution (Max.)	3840 x 2160
Minimum Focus Distance	50 cm
Zoom	8x (Max)
ePTZ	Yes
Auto Framing	Yes
Voice Tracking	Yes
WDR	Yes
2D / 3D Noise Reduction	Yes
Video Format	MJPEG, H.264
Presets	3 for IR remote control 128 for USB command
Built-in Mic	
Mic Element	4 Mics
Pickup Distance	6 Meters
Frequency Response	50 Hz ~ 8kHz
Sensitivity	-32 dBV
SNR	76 dBV
Echo Cancellation	Yes
Noise Suppression	Yes

Speaker	
Configuration	20W, speaker element x1 + passive diaphragm x 1
Frequency Response	20Hz ~ 20kHz
Speaker Max SPL	95 ± 3dB 0.5m / 5W
Distortion	5% AT 5.0W / 4.47V 1kHz
Interface	
DC In	12V + / - 20%
USB	USB 3.0 type-B, compatible USB2.0
RJ-45	USB bridge to Ethernet
LED Indicator	Ring, 3 color LED (Green, Blue, Red)
Expansion Mic Input	Yes, with JR-45 connector
Remote Controller	Yes
Others	
Kensington	Yes
Mount	TV Mount, Bracket
Weight	3.8 lbs (1.7 kg)
Dimension (W x L x H)	23.51" x 3.55" x 2.95" (597 x 90 x 75 mm)

Optional Accessory

Expansion Mic: MS-EM1	
Maximum Expansion Mic Number	2
Maximum Expansion Distance	10 m
Expansion Mic Pickup Distance	3 m

MS-EM1



Compatible Software



User Interface



Lumens®

Lumens Integration, Inc.
4116 Clipper Court
Fremont, CA, 94538
Phone: +1-866-600-0988
Fax: +1-510-252-1389

Lumens Europe
De Nayerstraat 17 9470
Denderleeuw Belgium
Phone: +32-473-58-38-95
Fax: +32-2-452-76-00



www.MyLumens.com