

# **Lumens<sup>®</sup>**

PEGATRON GROUP

# Product Catalog

March 2025



[www.MyLumens.com](http://www.MyLumens.com)

# Table of Contents

---

- **CamConnect Voice Tracking**
- **Auto-Tracking Cameras**
- **PTZ Cameras**
- **NDI Cameras**
- **Box Cameras**
- **Camera Controllers**
- **Video Conference Camera**
- **Media Processors**
- **Encoders and Decoders**
- **AV over IP**
- **Desktop Document / Ceiling Camera**
- **Document Cameras**
- **Software**
- **PTZ Camera Accessories**
- **Cables and Accessories**

# CamConnect Speaker Tracking

**AI-Box1  
CamConnect Pro**



<b>Maximum Supported Cameras</b>	4xIP or 3xIP + 1xUSB Cameras
<b>Supports Multi-array Microphones</b>	Yes
<b>Supports Video Input Format</b>	IP (1080@60/50 fps), USB (1080p@30/25)
<b>Video Output</b>	USB (USB Type-C), HDMI
<b>Power</b>	USB Type-C Power (5V, 4A)
<b>Voice Tracking</b>	Yes, with supported directional microphone arrays
<b>Camera Auto Switching</b>	Yes
<b>People Tracking</b>	Yes
<b>Center Stage</b>	Yes
<b>Multiview (Video Source Mixing)</b>	Yes, Side-by-Side (PBP) / 2x2 Gallery

# 4K and HD Auto-Tracking Cameras



	Best	Best	Best	Better	Better
<b>Sensor</b>	1/1.8" 8.48M	1/2.8" 8.51M	1/2.8" 8.6M	PTZ: 1/2.8" 2.16MP Panoramic: 1/2.8" 2MP	PTZ: 1/2.8" 2.16MP Panoramic: 1/2.8" 2MP
<b>Resolution</b>	2160p60	2160p60	2160p59.94	1080p60	1080p60
<b>Video Output</b>	HDMI / Ethernet / 3G-SDI / USB	HDMI / Ethernet / USB	3G-SDI / HDMI / Ethernet / USB	HDMI / 3G-SDI / USB / Ethernet	3G-SDI / HDMI / Ethernet / USB
<b>Zoom</b>	30x	12x	12x	20x	20x
<b>Horizontal View</b>	PTZ: 59.2° Panoramic: 85.1°	PTZ: 81° Panoramic: 110°	81°	PTZ: 58.7° Panoramic: 111°	PTZ: 58.7° Panoramic: 111°
<b>PoE</b>	PoE+	PoE+	PoE+	PoE	PoE
<b>Audio In</b>	Line In	Line In	Line In	Line In / Mic In	Line In / MIC In
<b>Video Compression</b>	H.265(HEVC) / H.264 / MJPEG / YUV2 / NV12	H.264 / MJPEG / NV12	H.264 / MJPEG / YUY2 / NV12	H.264 / MJPEG	H.264 / MJPEG
<b>Streaming Protocol</b>	RTSP / RTMP / RTMPS / SRT	HTTP / RTSP / RTMP / RTMPS / SRT	HTTP / RTSP / RTMP / RTMPS / SRT	NDI HX3 / NDI HX2 / HTTP / RTSP / RTMP / RTMPS / SRT	HTTP / RTSP / RTMP / RTMPS / SRT
<b>Camera Control</b>	RS-232 / Ethernet / USB / Remote	RS-232 / RS-422 / Ethernet / USB / Remote	RS-232 / Ethernet / USB / Remote	RS-232 / Ethernet / USB / Remote	RS-232 / Ethernet / USB / Remote

# HD Auto-Tracking Cameras



	Good	Good	Good
<b>Sensor</b>	1/2.8" 2.16MP CMOS	PTZ: 1/2.8" 2.16MP Panoramic: 1/2.8" 2MP	PTZ: 1/2.8" 2.13MP Panoramic: 1/2.5" 8.57MP
<b>Resolution</b>	1080p60	1080p60	1080p60
<b>Video Output</b>	3G-SDI / HDMI / Ethernet	HDMI / Ethernet / USB	HDMI / 3G-SDI / USB / Ethernet
<b>Zoom</b>	20x	12x	20x
<b>Horizontal View</b>	57°	PTZ: 72.5° Panoramic: 111°	PTZ: 58.7° Panoramic: 100°
<b>PoE</b>	PoE+	PoE	PoE+
<b>Audio In</b>	Line In / MIC In	Line In / MIC In	Line In
<b>Video Compression</b>	H.264 / MJPEG	H.264 / MJPEG	HEVC(H.265) / H.264 / MJPEG
<b>Streaming Protocol</b>	RTSP / RTMP / RTMPS / MPEG-TS / SRT	HTTP / RTSP / RTMP / RTMPS / SRT	RTSP / RTMP / RTMPS
<b>Camera Control</b>	RS-232 / RS-422 / Remote	RS-232 / Ethernet / USB / Remote	RS-232 / Ethernet / USB / Remote

# 4K and HD PTZ Cameras

VC-A71P



VC-A61P



VC-A53



VC-R31



	Best	Best	Better	Good
<b>Sensor</b>	1/1.8" 9.17MP	1/2.5" 8.57MP	1/2.8" 2.16MP	1/2.8" 2.16MP
<b>Resolution</b>	2160p59.94	2160p59.94	1080p60	1080p60
<b>Video Output</b>	12G-SDI / HDMI 2.0 / Ethernet / USB 3.0	3G-SDI / HDMI / Ethernet	3G-SDI / HDMI / Ethernet / USB	HDMI / Ethernet / USB 3.0
<b>Zoom</b>	30x	30x	20x	12x
<b>Horizontal View</b>	63°	68°	57°	72.5°
<b>PoE</b>	PoE++	PoE+	PoE	PoE
<b>Audio In</b>	Line In / MIC In	Line In / MIC In	Line In / MIC In	Line In / MIC In
<b>Video Compression</b>	HEVC(H.265) / H.264 / MJPEG	HEVC(H.265) / H.264	H.264 / MJPEG	H.264 / MJPEG
<b>Streaming Protocol</b>	RTSP / RTMP / RTMPS / MPEG-TS / SRT	RTSP / RTMP / RTMPS / MPEG-TS / SRT	RTSP / RTMP / RTMPS / MPEG-TS / SRT	RTSP / RTMP / RTMPS / SRT
<b>Camera Control</b>	RS-232 / RS-422 / Ethernet / USB / Remote	RS-232 / RS-422 / Ethernet / Remote	RS-232 / RS-422 / Ethernet / USB / Remote	RS-232 / Ethernet / USB / Remote

# 4K NDI Cameras



**NDI** HIGH BANDWIDTH  
**NDI HX3**  
**VC-A71P-HN**



**NDI HX3**  
**VC-A71SN**



**NDI HX2**  
**VC-A71PN**



**NDI HX2**  
**VC-A61PN**



	Best	Best	Best	Better
<b>Sensor</b>	1/1.8" 9.17MP	1/1.8" 9.17MP	1/1.8" 9.17MP	1/2.5" 8.57MP
<b>Resolution</b>	2160p59.94	2160p59.94	2160p59.94	2160p59.94
<b>Video Output</b>	HDMI 2.0 / Ethernet / 12G-SDI / 3G-SDI / USB3.0	12G-SDI / HDMI 2.0 / Ethernet / USB3.0	HDMI 2.0 / Ethernet	3G-SDI / HDMI / Ethernet
<b>Zoom</b>	30x	30x	30x	30x
<b>Horizontal View</b>	63°	63°	63°	68°
<b>PoE</b>	PoE++	PoE++	PoE+	PoE+
<b>Audio In</b>	Line In / MIC In	Line In / MIC In	Line In / MIC In	Line In / MIC In
<b>Video Compression</b>	HEVC(H.265) / H.264 / MJPEG	HEVC(H.265) / H.264 / MJPEG	HEVC(H.265) / H.264	H.264
<b>Streaming Protocol</b>	NDI High Bandwidth / NDI HX3 / NDI HX2 / RTSP / RTMP / RTMPS / MPEG-TS / SRT	NDI HX3 / NDI HX2 / RTSP / RTMP / RTMPS / MPEG-TS / SRT	NDI HX2 / RTSP / RTMP / RTMPS / MPEG-TS / SRT	NDI HX2 / RTSP / RTMP / RTMPS / MPEG-TS / SRT
<b>Camera Control</b>	RS-232 / RS-422 / Ethernet / USB 3.0 / Remote	RS-232 / RS-422 / Ethernet / USB 3.0 / Remote	RS-232 / RS-422 / Ethernet / Remote	RS-232 / RS-422 / Ethernet / Remote

# HD NDI Cameras



	Good	Good
<b>Sensor</b>	1/2.8" 2.16MP	PTZ: 1/2.8" 2.16MP Panoramic: 1/2.8" 2MP
<b>Resolution</b>	1080p60	1080p60
<b>Video Output</b>	3G-SDI / HDMI / Ethernet	HDMI / 3G-SDI / USB / Ethernet
<b>Zoom</b>	20x	20x
<b>Horizontal View</b>	57°	PTZ: 58.7° Panoramic: 111°
<b>PoE</b>	PoE+	PoE
<b>Audio In</b>	Line In / MIC In	Line In / MIC In
<b>Video Compression</b>	H.264 / MJPEG	H.264 / MJPEG
<b>Streaming Protocol</b>	NDI HX2 / RTSP / RTMP / RTMPS / MPEG-TS / SRT	NDI HX3 / NDI HX2 / HTTP / RTSP / RTMP / RTMPS / SRT
<b>Camera Control</b>	RS-232 / RS-422 / Ethernet / Remote	RS-232 / Ethernet / USB / Remote



# 4K and HD Box Cameras



**VC-BC701P**



**VC-BC601P**



**VC-BC301P**

	Best	Better	Good
<b>Sensor</b>	1/2.5" 8.57MP	1/2.5" 8.57MP	1/1.8" 9.17MP
<b>Resolution</b>	2160p60	1080p60	2160p60
<b>Video Output</b>	HDMI 2.0 / Ethernet	3G-SDI / HDMI / Ethernet	HDMI 2.0 / USB / Ethernet
<b>Zoom</b>	30x (Optical)	30x (Optical)	12x (Digital)
<b>Horizontal View</b>	68°	68°	102°
<b>PoE</b>	PoE	PoE	PoE
<b>Audio In</b>	Line In / Mic In	Line In / Mic In	Line In / Mic In
<b>Video Compression</b>	HEVC(H.265) / H.264	HEVC(H.265) / H.264	HEVC(H.265) / H.264 / MJPEG
<b>Streaming Protocol</b>	RTSP / RTMP / RTMPS / MPEG-TS / SRT	RTSP / RTMP / RTMPS / MPEG-TS / SRT	RTSP / RTMP / RTMPS / MPEG-TS / SRT
<b>Camera Control</b>	RS-232 / Ethernet	RS-232 / Ethernet	Ethernet / USB / Remote

# Camera Controllers

NDI HX3

VS-KB21N



VS-KB21



VS-K20



## Best

- Controls up-to 255 IP-connected or NDI-connected cameras
- Quick and precise control over camera position, movement, speed, focus and exposure
- Supports RTSP and NDI Stream Live Video Preview on LCD screen
- Supports RS-232, RS-422 and Ethernet control
- Supports VISCA, VISCA Over IP and NDI control protocols

## Best

- Controls up-to total of 255 IP-connected cameras
- Quick and precise control over camera position, movement, speed, focus and exposure
- Supports RTSP Live Video Preview on LCD screen
- Supports RS-232, RS-422 and Ethernet control
- Supports VISCA and VISCA Over IP control protocols

## Better

- Joystick for Pan/Tilt/Zoom and focusing
- Quick and precise control over camera position, movement, speed, focus and exposure
- The RS-232 / RS-422 communication interfaces allow long-distance Communication
- High brightness OLED display
- Auto backlight keys
- Multi-level protection from illegal operation and settings

# Video Conference Cameras



	Best	Best	Better	Good
<b>Sensor</b>	1/2.8" 8.29MP	1/2.8" 8.29MP	1/2.8" 2.41MP	1/2.8" 8.57MP
<b>Resolution</b>	2160p30	2160p30	1080p60	2160p30
<b>Video Output</b>	USB	USB	HDMI/ USB	USB
<b>Zoom</b>	1080p: 4x 720p: 8x	1080p: 4x	12x Zoom	1080p: 2x 720p: 3x
<b>Horizontal View</b>	110°	110°	72°	110°
<b>PTZ</b>	ePTZ	ePTZ	PTZ	ePTZ
<b>Microphone</b>	Built-in 4 Mics 2 Expansion Mics (optional)	Built-in 5 Mics	NA	Dual-Mics
<b>Voice Tracking / Auto Framing</b>	Voice Tracking / Auto Framing	Auto Framing	NA	Auto Framing
<b>Control Interface</b>	USB	USB	RS-232 In and Out / USB	USB
<b>Control Protocol</b>	UVC / UAC	UVC / UAC	VISCA / UVC	UVC / UAC

# Video Conference Cameras

VC-B10U



VC-B2U



	Good	Good
<b>Sensor</b>	1/2.3" 12.35MP	1/2.7" 2.13MP
<b>Resolution</b>	1080p60	1080p30
<b>Video Output</b>	USB3.0	USB
<b>Zoom</b>	1080p: 2x 720p: 3x	NA
<b>Horizontal View</b>	110°	90°
<b>PTZ</b>	ePTZ	NA
<b>Microphone</b>	Dual Mics	Dual Mics
<b>Voice Tracking / Auto Framing</b>	NA	NA
<b>Control Interface</b>	USB	USB
<b>Control Protocol</b>	UVC / UAC	UVC / UAC

# Media Processors



\*Model without an HDD available in specific regions.

NDI HIGH BANDWIDTH



LC300S

NDI HIGH BANDWIDTH



LC300



LC200

NDI HX2



LC100N



LC100

	Best	Best	Better	Good	Good
<b>Channel Mixing</b>	4 Channels	4 Channels	4 Channels	2 Channels	2 Channels
<b>Recording</b>	2160p60	2160p60	1080p60	1080p60	1080p60
<b>Streaming</b>	2160p60	2160p60	1080p60	1080p60	1080p60
<b>Video Input Interface</b>	HDMI x4 / 3G-SDI x1 / 12G-SDI x1	HDMI x4 / 3G-SDI x1	HDMI x4	HDMI x2 / SDI x2	HDMI x2 / SDI x2
<b>IP and USB Video Input</b>	Lumens IP Camera / NDI High Bandwidth / NDI HX2 / NDI HX3 / RTSP / SRT / USB Camera	Lumens IP Camera / NDI High Bandwidth / NDI HX2 / NDI HX3 / RTSP / SRT / USB Camera	Lumens IP Camera / RTSP	Lumens IP Camera / NDI HX2 / RTSP / USB Camera	Lumens IP Camera / RTSP / USB Camera
<b>Audio Input</b>	HDMI or SDI Audio / Line In x2 / Combo(XLR/TRS) x2	HDMI or SDI Audio / Line In x2 / Combo(XLR/TRS) x2	HDMI Audio x4 / Line In x4	HDMI or SDI Audio x2 / Line In x1 / Combo(XLR/TRS) x2 / USB Audio x1	HDMI or SDI Audio x2 / Line In x1 / Combo(XLR/TRS) x2 / USB Audio x1
<b>Video Output</b>	HDMI x2 / HDMI Pass-Thru x1 / UVC x1	HDMI x2 / HDMI Pass-Thru x1 / UVC x1	HDMI x2	HDMI x2 / HDMI Pass-Thru x1	HDMI x2 / HDMI Pass-Thru x1
<b>Built-in Storage</b>	4TB HDD	4TB HDD	1TB HDD / Optional: 2TB HDD	2TB HDD	2TB HDD*
<b>Streaming Protocol</b>	RTSP / NDI High Bandwidth / RTMP / RTMPS / MPEG-TS / SRT / TCP / UDP / HTTP / DHCP Client	RTSP / NDI High Bandwidth / RTMP / RTMPS / MPEG-TS / SRT / TCP / UDP / HTTP / DHCP Client	RTP / RTSP / RTMP / RTMPS / MPEG-TS	RTP / RTSP / NDI HX2 / RTMP / RTMPS / MPEG-TS / SRT	RTP / RTSP / RTMP / RTMPS / MPEG-TS / SRT
<b>Remote Control Panel</b>	LC-RC01	LC-RC01	LC-RC01	LC-RC01	LC-RC01

# Encoders and Decoders

Dante AV-H™

OIP-N60D  
Dante AV-H



- Decodes Dante AV-H & RTSP with HDMI and USB out
- Supports bi-directional Dante audio
- Delivers low latency 4K video
- Long-distance IP-based AV transmission
- Supports PoE and USB power for easy installation



NDI HX3

OIP-N60D



- Decodes RTSP, SRT, NDI HX3, NDI HX, HLS, MPEG-TS
- Long-distance 4K IP-based AV transmission
- OIP-N60D decodes IP video streams from NDI HX and RTSP to UVC/UAC
- USB Webcam Extension
- Video Wall Deployment



NDI HX3

OIP-N40E



- Encodes RTSP, RTMP, SRT, NDI HX3, NDI HX, HLS, MPEG-TS
- Delivers pristine 1080P video quality with ultra-low latency
- Long-distance HDMI, USB and DisplayPort transmission
- Dual Tally lights (360°)
- USB Webcam Extension

# AV over IP



OIP-D50E/D



OIP-D40E/D



OIP-D50C

<b>Network Bandwidth</b>	1 Gbps	1 Gbps	100 Mbps
<b>Max Resolution</b>	4K30 4:4:4	1080p60 4:4:4	NA
<b>Latency</b>	1-2 frames	1-2 frames	NA
<b>Video Output</b>	HDMI / VGA	HDMI	HDMI
<b>Video Input</b>	HDMI / VGA	HDMI	-
<b>PoE</b>	PoE	-	PoE
<b>Ethernet Port</b>	3 Ports	1 Port	1 Port
<b>Audio over IP</b>	Stereo in / out	Stereo in / out	NA
<b>Control over IP</b>	IR / RS232	IR / RS232	IR / RS232
<b>KVM over IP</b>	YES	-	-

# Desktop Document Camera



**PS753**

	Best
<b>Total Zoom</b>	300x
<b>Mechanical Zoom</b>	NA
<b>Digital Zoom</b>	30x
<b>Resolution</b>	2160p30
<b>Shooting Area</b>	20.5" x 12.1" (522 x 308mm)
<b>Lamp</b>	LED x 2 A4 Size LED Backlight
<b>Input</b>	HDMI
<b>Output</b>	HDMI / VGA / USB / Ethernet
<b>Power</b>	External, 12V DC Adapter / PoE+
<b>Control</b>	RS-232 / USB / IP

# Ceiling Camera



**CL511**

	Best
<b>Total Zoom</b>	300x
<b>Mechanical Zoom</b>	NA
<b>Digital Zoom</b>	15x
<b>Resolution</b>	2160p30
<b>Shooting Area</b>	At 2m Height 87.9" x 47.6" (2235 x 1211mm)
<b>Lamp</b>	Laser Indicator
<b>Input</b>	USB
<b>Output</b>	VGA / HDMI / USB / Ethernet
<b>Power</b>	PoE+ / External, 12V DC
<b>Control</b>	RS-232 / USB / IP



# Document Cameras



<b>Total Zoom</b>	30x	16x	16x
<b>Mechanical Zoom</b>	6.8x	7x	8x
<b>Digital Zoom</b>	30x	16x (via Software)	16x (via Software)
<b>Resolution</b>	2160p30	2160p30	1080p30
<b>Shooting Area</b>	16.5" x 12.4" (420 x 316mm)	16.8" x 12.6" (428 x 321mm)	18.8" x 14.1" (480 x 360mm)
<b>Lamp</b>	LEDx1	LEDx1	LEDx1
<b>Input</b>	HDMI	NA	NA
<b>Output</b>	HDMI / USB	USB 3.0	USB
<b>Power</b>	External, 12V DC Adapter	USB Bus Power	USB Bus Power
<b>Control</b>	USB	USB	USB

# Document Cameras

**DC-F80**



**DC-F20**



**DC193/ PC193**



<b>Total Zoom</b>	30x	16x	240x
<b>Mechanical Zoom</b>	3.4x	6x	10x
<b>Digital Zoom</b>	30x	16x (via Software)	12x
<b>Resolution</b>	2160p30	1080p30	1080p30
<b>Shooting Area</b>	16.5" x 12.4" (420 x 316mm)	17.8" x 13.4" (453 x 340mm)	14.6" x 11" (370 x 280mm)
<b>Lamp</b>	LEDx1	LEDx1	LEDx2
<b>Input</b>	NA	NA	VGA / HDMI
<b>Output</b>	HDMI / USB	USB Type-C	VGA / HDMI / USB / C-Video
<b>Power</b>	USB Bus Power	USB Bus Power	Built-in Power Supply
<b>Control</b>	USB	USB	RS-232 / USB

# Software



## Deployment Tool 2.0

Remotely manage and control multiple Lumens IP devices.



## Camera Controller

Remotely manage and control multiple Lumens cameras via their IP and USB interfaces.



## Routing Switcher

Routing Switcher provides live multi-view monitoring of OIP-N network transcoders and Lumens IP cameras.



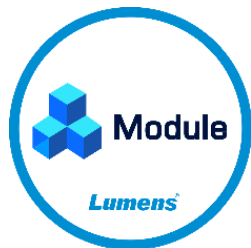
## Virtual Camera 2.0

Allows users to connect a Lumens professional IP camera to the host computer using Ethernet.



## CaptureVision Mini Controller

Lumens CaptureVision systems are designed to offer organization and events a powerful but easy-to-use media station.



## CamConnect Control Module

Integrate Lumens CamConnect Pro with third party controllers.



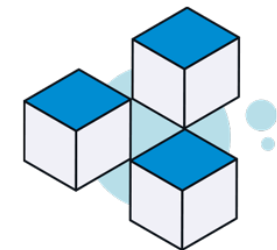
## Ladibug 4K

Transform Your Document Camera with the Ladibug Suite of Creative Tools.



## OBS Plugin

OBS Plugin and Dockable Controller for PTZ & Box Cameras.



## Companion Module

Control Deck for Lumens PTZ Cameras and Live Streaming Device.

# PTZ Camera Accessories

## Cable



**CAB-AOCH-XL**  
HDMI 2.0 Active  
Extender Cable



**CAB-AOCU-ML**  
USB 3.1 Gen 1 Active  
Extender Cable



**CAB-RS232-01**  
VISCA Cable Extender



**VC-AC02**  
HDCI Cable



**VC-AC06**  
VISCA Cable Extender



**VC-AC07**  
VISCA Cable Extender

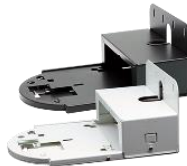
## Mount



**VC-AC03**  
USB PTZ Camera  
Wall Mount



**VC-WM11**  
Camera Wall Mount



**VC-WM12**  
PTZ Wall Mount



**VC-WM13**  
J-type Ceiling Mount



**VC-WM14**  
3-in-1 Multipurpose  
Mount



**VC-WM15**  
J-type Ceiling Mount

## Other



**VC-IR01**  
Remote Control



**MS-EM1**  
Expansion Microphone  
for MS-10S

# Cables and Accessories

## *Document Camera*

---



**CL-A01**  
Ceiling Mount Bridge  
*For CL511*



**DC-A06**  
Extender USB Cable  
*USB 2.0 cable extender*



**DC-A07**  
Microscope Adapter  
*For DC136 & DC172  
Document cameras*



**PS-A04**  
PS Padded Bag  
*For the PS Document Camera*



**DC-A16**  
Mini-DIN Adapter  
*For RS232, C-Video,  
DC visualizer series only*

## *AVoIP*

---



**OIP-AC01**  
6U Rack-mount Chassis  
*For AV over IP series*

## *Media Processor*

---



**LC-RC01**  
Remote Control Panel  
*for LC series*

# **Lumens<sup>®</sup>**

[www.MyLumens.com](http://www.MyLumens.com)

## **WE LOOK FORWARD TO WORKING WITH YOU**

### **Lumens Digital Optics Inc.**

5F, No.20, Taiyuan St., Jhubei City 30288, Taiwan  
Tel: +886-3-552-6255 Fax: +886-3-552-6256

### **Lumens Europe**

De Nayerstraat 17 9470 Denderleeuw Belgium  
Phone: +32-473-58-38-95 Fax: +32-2-452-76-00

### **Lumens Integration, Inc.**

4116 Clipper Court, Fremont, CA, 94538  
Phone: +1-866-600-0988 Fax: +1-510-252-1389

### **Lumens 中国**

上海市浦东新区新金桥路1888号凯龙金领大厦 40幢1106室  
电话: +86-21-51-098-999

Lumens is the registered trademark of Lumens Digital Optics Inc. Changes in specification or design may be done without notification.