

CaptureVision Mini Controller

User Manual - English



Version 1.0.1

Contents

Chapter 1	System Requirements	2
1.1	Operating System	2
1.2	System Hardware Requirements.....	2
Chapter 2	Connection.....	3
Chapter 3	User Interface.....	4
3.1	Settings.....	4
3.2	Director functions	5
3.3	Information	6
Chapter 4	Troubleshooting	7
	Copyright Information	8

Chapter 1 System Requirements

1.1 Operating System

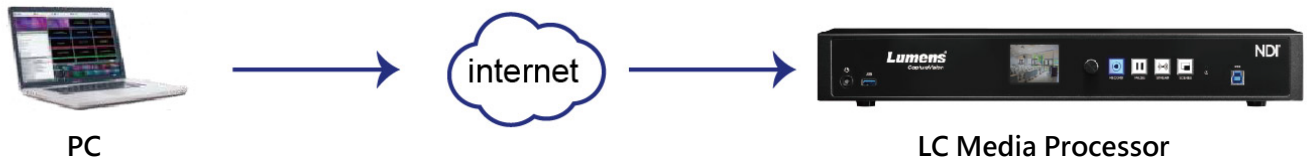
- Windows 10
- Windows 11

1.2 System Hardware Requirements

Item	Requirements
CPU	Intel® Core™ i5 (7th gen and above) or above, or equivalent AMD CPU
Memory	DRAM: 8GB above
Free Disk Space	10 GB free disk space for installation
Ethernet	100 Mbps network card

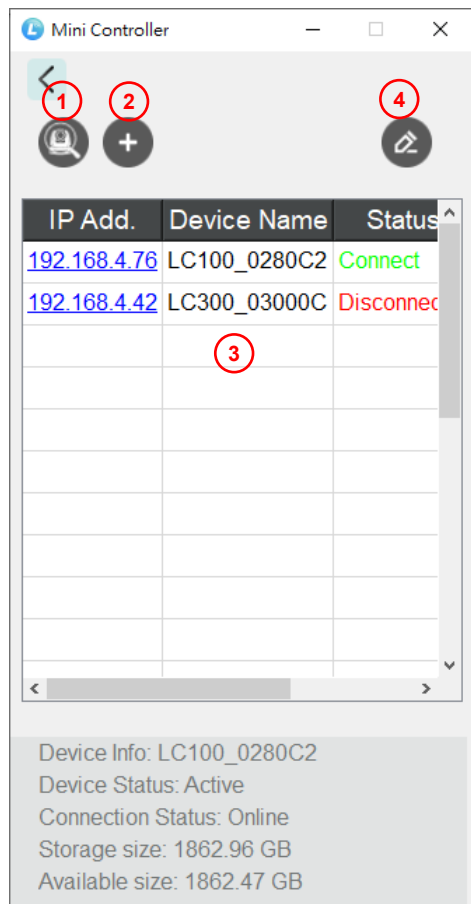
Chapter 2 Connection

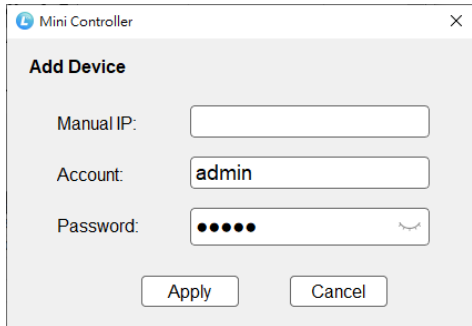
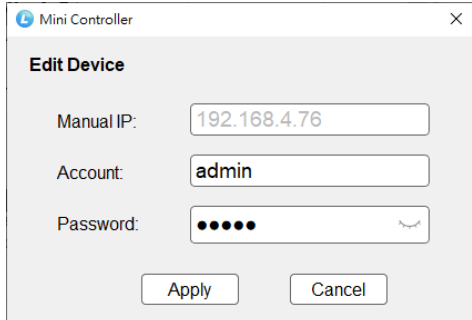
Make sure the computer and the LC media processor are connected in the same network segment.



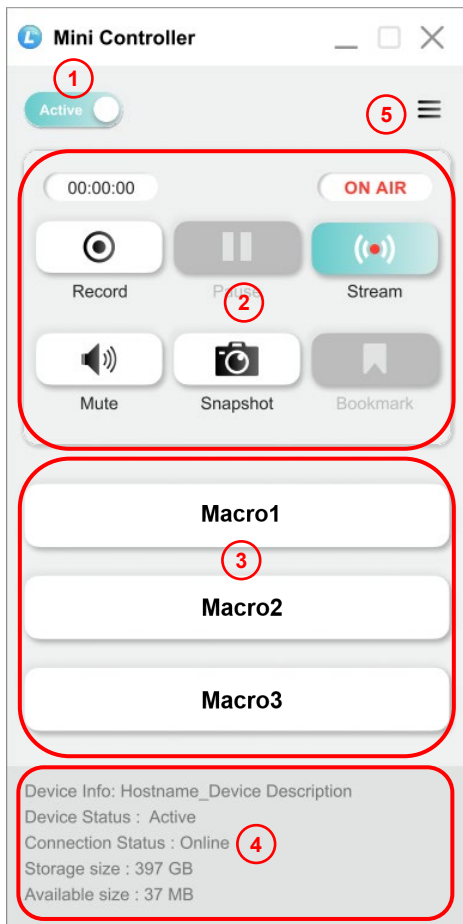
Chapter 3 User Interface

3.1 Settings



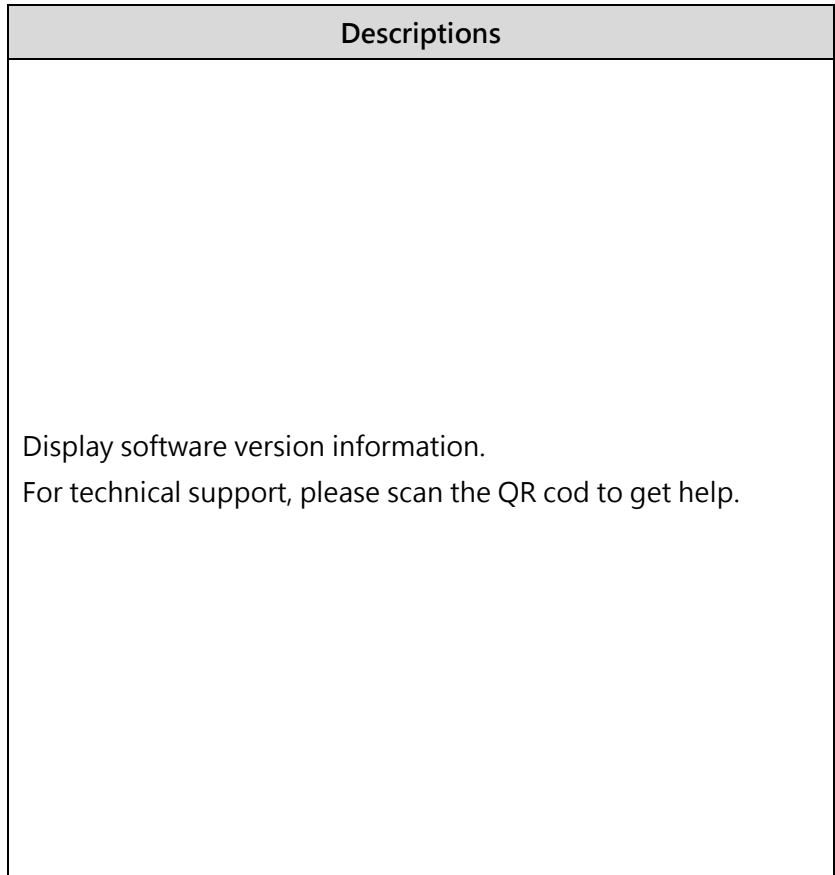
No	Item	Descriptions
1	Search	Search Device
2	Add	Enter the IP to add device. 
3	Device List	Displays the IP address, device name, and connection status of the LC media processor. <ul style="list-style-type: none"> Double-click the device to connect. Click the IP to access the device's web interface.
4	Edit	Edit the login account and password for the LC media processor. 

3.2 Director functions



No	Item	Descriptions
1	Active/ Standby	Enable/ Disable the sleep mode.
2	Director functions	<ul style="list-style-type: none"> ▪ Record: Start/ Stop recording ▪ Recording Time: Timer starts counting after recording begins ▪ Pause: Pause/ Resume recording ▪ Stream: Start/ Stop streaming ▪ ON AIR: Indicates whether streaming is active ▪ Mute: Enable/ Disable mute ▪ Snapshot: Take a photo ▪ Bookmark: Insert a knowledge point
3	Macro	Call Macro 1/ 2/ 3
4	Information	Display current information of the device.
5	Menu	Switch between the Settings and Information pages

3.3 Information



Chapter 4 Troubleshooting

This chapter describes problems you may encounter while using CaptureVision Mini Controller. If you have questions, please refer to related chapters and follow all the suggested solutions. If the problem still occurred, please contact your distributor or the service center.

No.	Problems	Solutions
1.	Unable to search devices	Please make sure that the computer and the Recording System are connected in the same network segment.
2.	The operating steps in the manual are not consistent with the software operation	The software operation may be different from the description in the manual due to functional improvement. Please make sure you've updated your software to the latest version. <ul style="list-style-type: none">▪ For the latest version, please go to the Lumens official website > Service Support > Download Area. https://www.MyLumens.com/support

Copyright Information

Copyrights © Lumens Digital Optics Inc. All rights reserved.

Lumens is a trademark that is currently being registered by Lumens Digital Optics Inc.

Copying, reproducing or transmitting this file is not allowed if a license is not provided by Lumens Digital Optics Inc. unless copying this file is for the purpose of backup after purchasing this product.

In order to keep improving the product, the information in this file is subject to change without prior notice.

To fully explain or describe how this product should be used, this manual may refer to names of other products or companies without any intention of infringement.

Disclaimer of warranties: Lumens Digital Optics Inc. is neither responsible for any possible technological, editorial errors or omissions, nor responsible for any incidental or related damages arising from providing this file, using, or operating this product.