



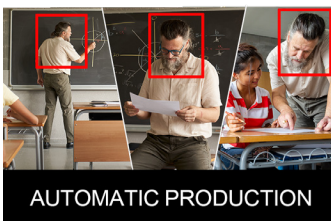
VC-TR30 AI Auto-Tracking Camera



VC-TR30 is a cost-effective and feature-packed HD PTZ camera with AI-based auto-tracking and auto-framing. Video is delivered simultaneously from the HDMI, USB and IP ports. Power is supplied by a DC adapter or by PoE (Power over Ethernet). With its 12x zoom, the VC-TR30 is highly adaptable, suitable for meeting rooms, live events and video studios.

Key Features

- AI-Powered Tracking with Human Detection
- 3 Tracking modes and 2 Framing modes
- HDMI, Ethernet and USB simultaneous output
- 1080P 60fps with 12x Optical Zoom
- Mount upright or inverted



AUTOMATIC PRODUCTION

Automatic Production

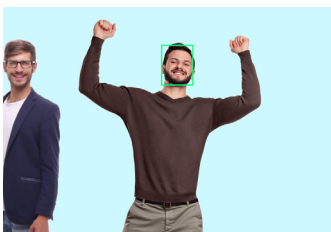
VC-TR30 is perfect for use in meeting rooms and presentations because of its intelligent auto-tracking and auto-framing modes. Both enable hands-off video capture, with the camera following a presenter or framing the shot around delegates present in the meeting room.



72.5°

Flexible Lens

The 12x zoom lens has a 72.5° horizontal field of view at its widest setting, facilitating its use in small video studios, meeting spaces or presentation stages. It works in partnership with the high sensitivity sensor to deliver excellent video quality in all lighting conditions.



Gesture Control Tracking Method

The VC-TR30 features advanced gesture control. When the presenter raises their hands, the tracking target will switch automatically. You can also manually change the tracked subject by selecting the individual via the web interface.



AV over IP

Single Cable Installation

The VC-TR30's Ethernet connection is multi-purpose. Connected to a PoE-enabled switch, the network cable can transport video, power and control signals. This makes installation extremely quick and cost-effective.

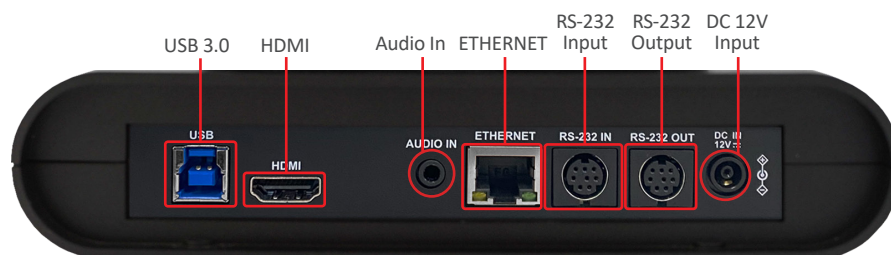


Product Specifications

PTZ Camera	
Sensor	1 / 2.8" 2.16MP CMOS
Video Format	1080p60 1080p50 1080p30 1080p25 720p60 720p50
Video Output (HD) Interface	HDMI / Ethernet / USB 3.0
Optical Zoom	12x
Digital Zoom	12x
Horizontal Viewing Angle	72.5°
Vertical Viewing Angle	40.8°
Diagonal Viewing Angle	83.2°
Aperture	F1.6 ~ F2.8
Focal Length	f = 3.9mm ~ 46.8mm
Shutter Speed	1 / 25 ~ 1 / 10,000 sec
Minimum Object Distance	Wide = 1000mm , Tele = 1500mm
Video S / N Ratio	> 50dB
Minimum Illumination	1 lux (F1.6, 50IRE, 30fps)
Focus System	Auto, manual
Gain Control	Auto, manual
White Balance	Auto, manual
Exposure Control	Auto, manual
WDR	Yes
3D NR	Yes
Image Flip	Yes
Auto Tracking	Everywhere / Stage / Partition
Auto Framing	Everywhere / Partition
Gesture Control	Yes
Panoramic camera	
Sensor	1 / 2.8" 2MP CMOS
Video Format	720p30
Horizontal Viewing Angle	111°
Vertical Viewing Angle	62°
Aperture	F2.4
Focal Length	3.1mm

Pan & Tilt	
Panning Angle	+170 ~ 170°
Panning Speed	0.2 ~ 120° / sec
Tilting Angle	+90 ~ -30°
Tilting Speed	0.2 ~ 80° / sec
Preset Positions	256
Output	
IP Stream	PTZ Camera Main : 1080p60 Second : 720p30 Panoramic Camera : 720p30
IP Compression	H.264
USB Output	1080p30
USB Compression	MJPEG
Network	
IP Protocol	HTTP / RTSP / RTMP / RTMPS / SRT
PoE	Yes(IEEE802.3af)
Audio	
Audio Input	Line In / MIC In
Audio Output	Ethernet / USB 3.0 / HDMI
Audio Compression Format	AAC / PCM
Camera Control	
Interface	RS-232 / Ethernet / USB 3.0
Protocol	VISCA / ONVIF
UVC	1.1
UAC	Yes
General	
DC In	12V + / - 20%
Power consumption	PoE: 11W DC In: 10W
Body Color	Black / White
Weight	3.3lbs (1.5 kg)
Dimension	7.5" x 7.3" x 5.4" (190 x 185 x 138 mm)

I/O Connections



Lumens[®]

Lumens Integration, Inc.
4116 Clipper Court
Fremont, CA, 94538
Phone: +1-866-600-0988
Fax: +1-510-252-1389

Lumens Europe
De Nayerstraat 17 9470
Denderleeuw Belgium
Phone: +32-473-58-38-95
Fax: +32-2-452-76-00



www.MyLumens.com